

## Short Report



Franconian Open Air Museum Fladungen | ©Julia Marmulla

## Franconian Open Air Museum Fladungen

Bahnhofstraße 19  
97650 Fladungen

Tel: +49 97 78 91 23 0

info@freilandmuseum-fladungen.de  
[www.freilandmuseum-fladungen.de](http://www.freilandmuseum-fladungen.de)

### Welcome!

In the Franconian Open Air Museum Fladungen, visitors can experience the past rural way of building, working and living from all of Lower Franconia and the neighbouring Rhön in Hesse and Rhön in Thuringia on a 12-hectare site. You can expect more than 30 restored agricultural estates and community buildings as well as theme gardens, orchards, fields and pastures. Further information can be found at <https://freilandmuseum-fladungen.de/en>.

# TEST RESULT

---

for

## Fränkisches Freilandmuseum Fladungen

97650 Fladungen, Certificate-ID: PA-12035-2025



This offer was classified according to  
the criteria of the nationwide label

**»Tourism for All«**

and, in the period from

**August 2025 – July 2028**

is entitled to use the label

**»Accessibility checked«**

and the associated pictograms  
in accordance with the contract.

## Overview

- Open-air museum with 12 hectares
- Historical buildings, gardens and green spaces, animals
- Various tours, events and Action programs for groups. Further information can be found on the homepage
- Free audio guide for smartphone app
- Gastronomy: "Brotzeitstübchen" and museum tavern " Zum Schwarzen Adler"
- Museum shop on site

## Accessibility at a glance

- Parking spaces for people with disabilities
- Outdoor paths are mostly easy to walk and drive on and have mostly longitudinal slopes of up to 6%, but also longitudinal slopes of up to 12%
- Many rooms and facilities that can be used by guests are accessible without steps
- 70 cm minimum width of almost all raised passageways/doors
- Toilets for people with disabilities
- Assistance dogs welcome
- Throughout the museum grounds, there are a variety of interactive stations for people with and without disabilities (hands-on stations), smell and hearing stations, and films in German sign language
- Information in easy-to-read language is available in the Büttnerhaus and communal freezer facility, as well as at the interactive station "Wir versetzen Häuser" (We move houses).
- Guided tours for people with disabilities
- Hearonymus smartphone app
- For detailed information on accessibility at events, please contact the Franconian Open-Air Museum Fladungen directly

# Information for people with walking difficulties and wheelchair users

All areas relevant for testing meet the quality criteria of the label "**Accessibility certified – partially accessible for people with walking disabilities**".

Some **information on accessibility** are listed below. For detailed information please see the evaluation report.

- There are two parking spaces for people with disabilities.
- The Fladung train station is 100 m away.
- The outdoor paths are at least 150 cm wide and mostly easy to walk and drive on. Some paths lead over cobblestones. Paths have maximum longitudinal gradients of up to 12%.
- Seating is available.
- Many rooms and facilities that can be used by guests and are elevated are accessible without steps/at ground level or via a ramp. However, many facilities can only be reached via steps/stairs.
- Almost all doors/passages and paths that can be used by guests are at least 70 cm wide.
- Exhibits and information can mainly be viewed from a seated position.
- There is playground equipment that is accessible and usable for wheelchair users, such as ring toss, bridge building, etc.
- There are wheelchair accessible tables in the restaurant and on the terrace of the museum inn (maximum height 80 cm, wheelchair accessible at a height of 67 cm and a depth of 30 cm).
- There are three public toilets for people with disabilities, some of which can be accessed from one side. There are folding grab rails on the left and right.
- The Hearonymus smartphone app is available.
- Guided tours are offered for people with walking disabilities and wheelchair users. Advance booking is necessary.
- Mobile or fixed seating is available for people with walking disabilities, which can be used during the tour.
- For detailed information on accessibility during events, please contact the Franconian Open-Air Museum Fladungen directly.

# Information for people with hearing impairments and deaf people

Some **information on accessibility** are listed below. For detailed information please see the evaluation report.

- There is no inductive hearing system available.
- Information about the exhibits is mainly provided in written form.
- There is a film in the Büttnerhaus with German sign language.
- There are a variety of interactive stations for people with and without disabilities throughout the museum grounds.
- In the dining room and on the terrace of the museum restaurant, there are tables with bright, glare-free lighting and no lamps that interfere with the field of vision or eye contact.
- There is a smartphone app called Hearonymus. The app offers a free audio guide in sign language through the museum grounds with 46 chapters and an audio guide in sign language for the museum railway with 6 chapters.
- Guided tours are offered for people with hearing impairments, but not for deaf people (in German sign language). Advance registration is required.
- For detailed information on accessibility at events, please contact the Franconian Open-Air Museum Fladungen directly.

## Information for visually impaired and blind people

All areas relevant for testing meet the quality criteria of the label "**Accessibility certified – partially accessible for people with visual impairments and blind people**".

Some **information on accessibility** are listed below. For detailed information please see the evaluation report.

- Assistance dogs are welcome.
- The signage (for orientation) is designed in easily legible, high-contrast font.
- All elevated areas accessible to guests are brightly lit without glare.
- The exhibits are well lit.
- Information about the exhibits is visually high-contrast.
- In the herb garden and the cooper's workshop, there is a tactile floor guidance system and a tactile overview map, as well as Braille and relief writing boards, a 3D model of the building, and further information about the Waldberg smithy.
- There are a variety of interactive stations for people with and without disabilities throughout the museum grounds.
- There is a smartphone app called Hearonymus. The app includes a free audio guide with audio descriptions of the museum grounds with 55 chapters and an audio guide in easy language for the museum railway with 6 chapters.
- Guided tours are offered for visually impaired and blind people. Advance registration for the tour is required.
- For detailed information on accessibility at events, please contact the Franconian Open-Air Museum Fladungen directly.

# Information for guests with cognitive impairments

Some **information on accessibility** are listed below. For detailed information please see the evaluation report.

- The name of the museum is clearly visible from the outside.
- Fladunger train station is 100 meters away.
- There are no signposts at regular intervals.
- There are various interactive stations for people with and without disabilities throughout the museum grounds.
- Information is provided in easy-to-read language in the Büttnerhaus and the interactive station “Wir versetzen Häuser” (We move houses).
- The information boards in the communal freezer facility are in simple language.
- There is a smartphone app called Hearonymus. The app includes a free audio guide with audio descriptions of the museum grounds with 55 chapters and an audio guide in easy language for the museum railway with 6 chapters.
- Guided tours are offered for people with cognitive impairments.
- The content (e.g., exhibits) of the guided tour for people with cognitive impairments is easy to understand or is explained in an easy-to-understand manner (e.g., pictorially).
- For detailed information on accessibility at events, please contact the Franconian Open-Air Museum Fladungen directly.



# Image Gallery

We have put together some photos from the company / offer for you. You can find more photos in the detailed reports.

---



**Parking lot for people with disabilities**

©Julia Marmulla



**Museum entrance**

©Julia Marmulla



**Museum entrance**

©Julia Marmulla



**Museum box office and store**

©Julia Marmulla



**Hands-on station 1**

©Gisela Moser



**POI 2 and hands-on station 2: Turning grain into flour**

©Gisela Moser



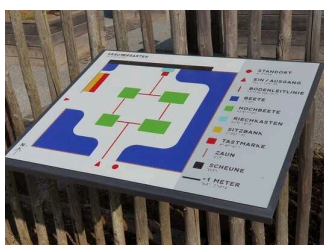
**Hands-on station 3**

©Julia Marmulla



**Hands-on station 3**

©Julia Marmulla



**POI 4: Herb garden**

©Gisela Moser



**POI 4: Herb garden and rabbit hutch**

©Gisela Moser



**POI 5: Residential house and farmstead from Bahra**

©Julia Marmulla



**POI 6: Bee house from Fladungen**

©Julia Marmulla



**POI 6: Bee house from Fladungen**

©Gisela Moser



**POI 6: Bee house from Fladungen**

©Gisela Moser



**Hands-on station 5: Work animals**

©Gisela Moser



**Hands-on station 5: Work animals**

©Gisela Moser



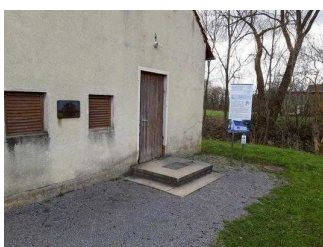
**POI 10: Catholic curate church from Leutershausen**

©Julia Marmulla



**POI 12: Cooperative sheep farm from Hausen**

©Gisela Moser



**POI 13: Community freezer from Nordheim**

©Julia Marmulla



**POI 13: Community freezer from Nordheim**

©Gisela Moser



**Participation station 6**

©Julia Marmulla



**Participation station 6**

©Julia Marmulla





POI 19: Phone booth

©Julia Marmulla



POI 20: Community brewery from Alsleben

©Julia Marmulla



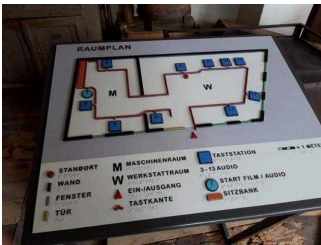
POI 20: Community brewery from Alsleben

©Julia Marmulla



POI 25: Buettinery from Sulzthal

©Julia Marmulla



POI 25: Buettinery from Sulzthal

©Julia Marmulla



POI 25: Buettinery from Sulzthal

©Julia Marmulla



POI 26: Forge from Waldberg

©Gisela Moser



POI 30: Three-sided farm from Leutershausen

©Julia Marmulla



POI 30: Three-sided farm from Leutershausen

©Julia Marmulla



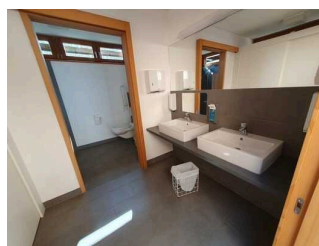
POI 30: Three-sided farm from Leutershausen with Museum Education & Activity Centre

©Gisela Moser



POI 30: Three-sided farm from Leutershausen

©Julia Marmulla



WC for people with disabilities in the action barn

©Gisela Moser



**POI 31: village school  
from Krausenbach**

©Julia Marmulla



**POI 31: village school  
from Krausenbach**

©Julia Marmulla



**POI 31: village school  
from Krausenbach**

©Julia Marmulla



**POIs with steps/stairs  
without alternatives**

©Gisela Moser



**POIs with steps/stairs  
without alternatives**

©Gisela Moser



**POIs with steps/stairs  
without alternatives**

©Gisela Moser



**Ways in the open air  
museum**

©Julia Marmulla



**POI 32: Fladungen  
Railway Station and  
Museum Railway**

©Gisela Moser

# Information on the "Tourism for All" labeling system

**All establishments and locations** certified with the label "Tourism for All" meet the following quality criteria:

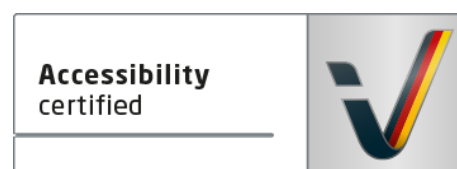
- Data and information on accessibility are collected and checked on site by **external, specially trained evaluators**. The method is not based on self-assessments.
- Data on accessibility is available **in detail** and can be viewed by the guests.
- At least one staff member has successfully passed a **training** on "**Accessibility as a comfort and quality feature**".

## The labeling – explanation of the logos and pictograms

The label "**Information about Accessibility**" indicates that detailed and verified information on accessibility is available for all groups of people.



The label "**Accessibility certified**" is based on "Information about Accessibility". It means that the quality criteria defined for specific groups of people are met partially or completely.



The label "**Accessibility certified**" is available in two requirement levels:

### "Accessibility certified: partially accessible".

The quality criteria are partially fulfilled for the pictured group of people, i.e. the establishment/location is partially accessible for wheelchair users. The "i" in the pictogram indicates that it is recommended to read again carefully whether the offer meets all (your oder the guest's) individual requirements.



### "Accessibility certified: accessible".

The quality criteria are fulfilled for the pictured group of people, i.e. the establishment/location is accessible for wheelchair users.



There are defined quality criteria for **seven groups of people** and a **specific pictogram** for each group.

People with walking disabilities



Wheelchair users



People with hearing impairment



Deaf people



People with visual impairments



Blind people



People with cognitive impairments

